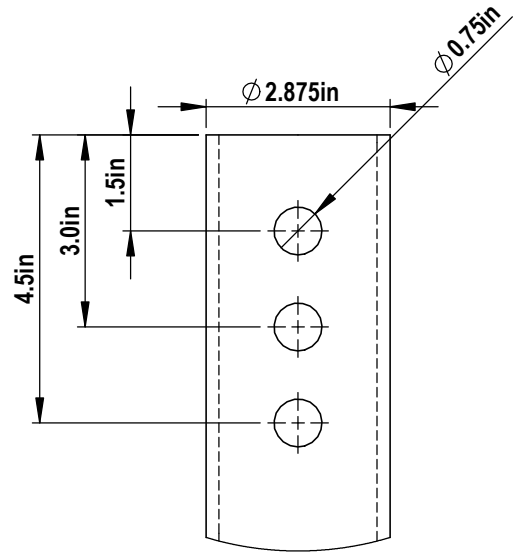
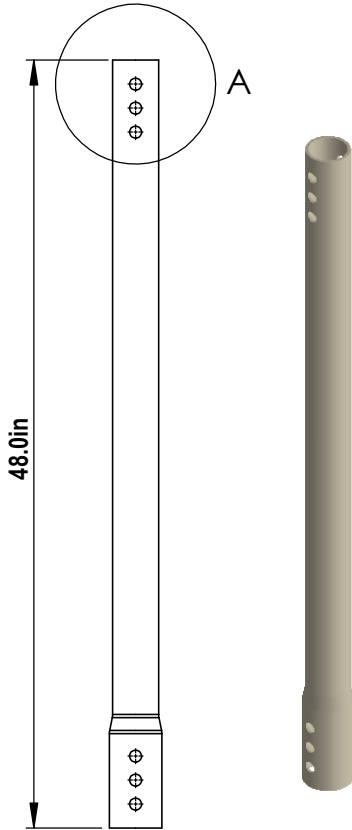


**NOTES:**

1. SHAFT: ROUND STRUCTURAL ERW TUBING PER ASTM A500 GR B, 2.50" SCH40. MINIMUM YIELD 50 KSI, MINIMUM TENSILE STRENGTH 65 KSI AND MINIMUM ELONGATION 23 PERCENT.
2. TORQUE STRENGTH RATING = 6,000 FT-LB
3. LOAD TO TORQUE RATIO (KT) = 9
4. USE THREE  $\frac{3}{4}$ " A307 GR A BOLTS TO ATTACH TO AN EXTENSION.
5. AVAILABLE NOMINAL LENGTHS ARE 2', 5', 7' AND 10.5'



**A** **DETAIL A**  
N.T.S.

DETAIL A  
SCALE 1 : 3

**1** **2.5" SCH40 Extension**  
1" = 1'-0"

**3** **16" HELIX**  
N.T.S.

**2** **16" HELIX**  
N.T.S.

CANTSINK MANUFACTURING, INC.



71 First Avenue, N.W.  
Lilburn, Georgia 30047  
678-280-PILE(7453)  
FAX:678-280-3476

Title: CANTSINK HELICAL PILE LEAD

Catalog No. 2.5-40X04

Revision: RV-12-12/1/2017

Scale: N.T.S.

Drawn by: LXSS

Sheet: 1/1